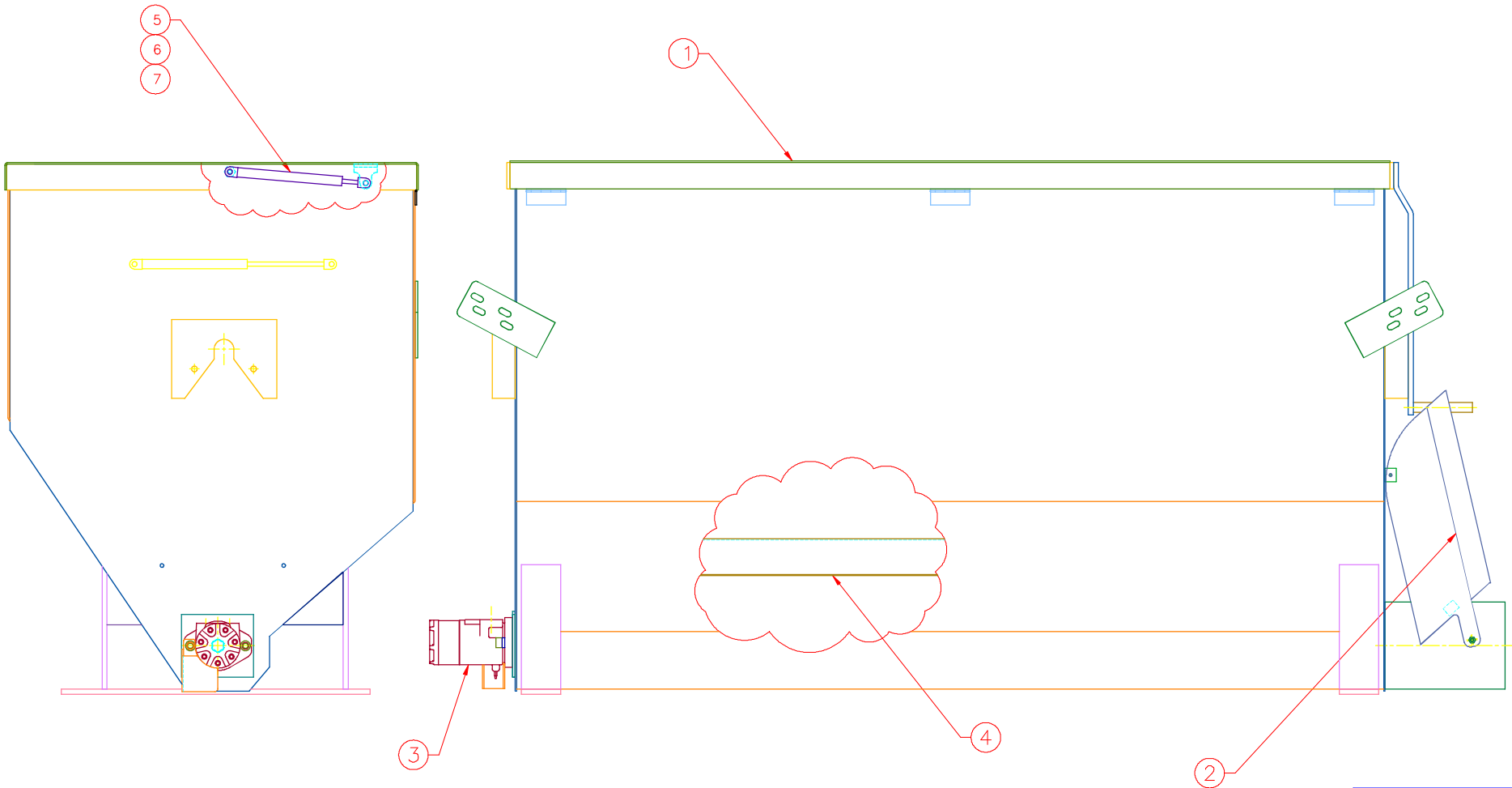


This drawing contains confidential proprietary information of Triple C, Inc. and is subject to return upon request. The furnishing of this drawing is not to be construed as the grant of any license, express or implied, to manufacture, have manufactured, use or sell the structures shown hereon.



ITEM	MATERIAL \ DESCRIPTION	LENGTH	QTY	DRAWING NO.
1	HF18-24 BODY WDMT		1	30-1307
2	HF12-59 SPOUT		1	30-1220
3	HF12-58 MOTOR/AUGER		1	30-1219
4	HF18-23 BAFFLE ASSY.		1	30-1306
5	BO 3/8x1		2	
6	BO 3/8 HNN		2	
7	BO 3/8 HNN		4	30-1308

**TRIPLE C**  
INC.

P.O. BOX 248, Sabetha, KS 66534  
(785) 284-3674 FAX (785) 284-3931

TOLERANCES  
Unless otherwise specified  
XX .010  
XXX .005  
XXXX .0005  
X/X 1/32  
ANGLE 0°30'

SHEET  
OF

SCALE:  
1:12

DRAWN BY:  
CHRIS ABERLE  
09/01/06

TITLE:  
FINAL ASSEMBLY,  
HF-1800

ASSEMBLY NUMBER:  
HF18-24

DRAWING NUMBER:  
30-0302

REV